

CORNERSTONE SOFTWARE



FOR SECONDARY SCHOOLS

INTRODUCTION

The **value** of using model mapping techniques and visual thinking tools has long been acknowledged. They can help individuals, groups and whole organisations to learn, understand, remember and think **more effectively**.

What hasn't existed before is a single piece of **visual learning software** that can be used to support a huge range of visual strategies that will **suit everyone** whatever their preferred learning or work style.

Cornerstone: Visual Thinking is able to do just that. It is **easy-to-use** and **flexible** enough to suit everyone.



ACCESSING KEYWORDS AND IMAGES

Use extensive categorised keyword **symbols** and **clip art**. Or **import** your own. And make your own clip art **library**.



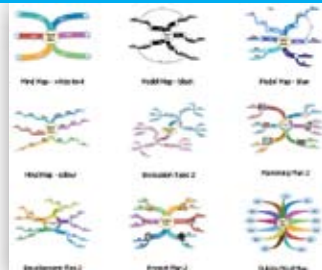
SUPPORTING WRITING

At a **click** of a mouse, you can convert a model map to a linear outline **writing plan**. This move helps students **think** about presenting their map paragraph by paragraph.

PRINTING DISPLAYS

Print out your maps to very **large sizes**. Use the tiling system to easily cut and glue together **impressive displays** for classrooms or corridors.

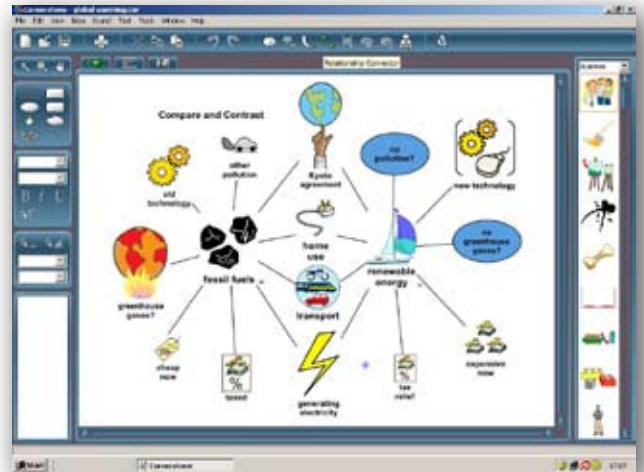
USING TEMPLATES



Let your students use a **range** of **templates** for all the different **visual tools**. Opposite you can see the varieties available just for Model Maps, showing the alternative connections, branches and type formats.

USING A RANGE OF VISUAL TOOLS

Develop your students' **thinking** with a range of different visual tools such as Model Maps, Single Bubbles, Clusters, Double Bubbles, Flowscapes, Timelines, Concept Maps, Flow Charts, Flow Bubbles, Fishbones and many others.



EXPORTING

Model maps and other visual tools can be exported to **Word** (via the outline plan) as well as to **Powerpoint** (for your presentations).

HIDING NOTES

At **every branch**, there is a facility to hide **linear notes**. Hide notes on teaching or assessment strategies in your curriculum **planning maps**.

MAKING HYPERLINKS

Wherever you want, add **hyperlinks** to **websites**, to **email** and to **files**. This helps students **capture** and **organise** the findings from their web **research**. As well as for content-rich teaching.

RECORDING SOUNDS

Each map can be listened to by students with the **text-to-speech** facility. **Record** your own **comments** for **personalised** learning. A great support for **independent** learning too.

GIVING PRESENTATIONS

Your maps can be **projected** and presented, **branch by branch**. This means you can build up the map carefully ensuring the audience gets the **big picture** for phased explanations. Perfect for classroom **whiteboards** as well as **assemblies**.

